

Outboards

VERADO | FOURSTROKE | PRO XS | RACING



MERCURY GO BOLDLY.™





Bold is who we are

Soon after Carl Kiekhaefer left his Wisconsin family farm in 1939, founded Mercury Marine® and changed the course of the boating industry forever, Mercury® was recognized as a powerful leader in the marine industry – a position strengthened by each ensuing Mercury innovation. Today, Mercury's heritage is rich with success born from a culture of knowledge, commitment and uncompromising standards, and bold has always been the unifying factor in the decisions and actions that led us to become the leader in marine propulsion. Bold not only drives us to produce extremely reliable engines with exceptional performance, it leads us to invent our own alloys, to design the most innovative controls and rigging, to create experience-enhancing propellers, and to offer the finest marine parts and accessories.

But above all else, bold is our commitment to deliver confidence, enjoyment and the greatest experiences on the water.

Welcome to Mercury, where bold is who we are.



John Pfeifer
President, Mercury Marine

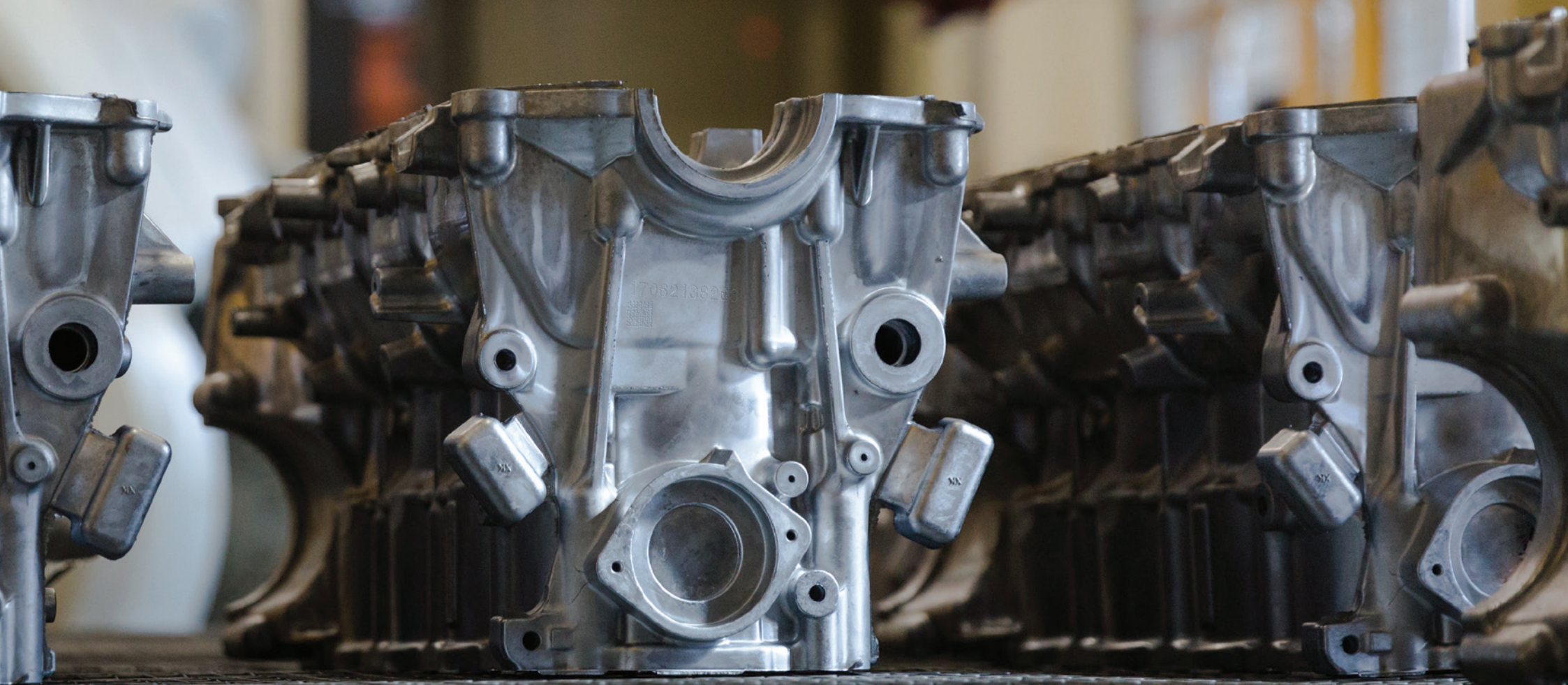


We create our own alloys to build the best engines

Engines are only as good as the materials they're made of and the people who make them, and our engines are made of the best of both. To ensure our engines stand up to highly demanding and corrosive environments, we utilize only the highest-quality performance materials. We create our fabrication processes and, over the last 10 years, Mercury has invented and patented more cast aluminium alloys than anyone else in the marine industry. We will stop at nothing to deliver products that deliver the best boating experiences.



MARINE - GRADE ALUMINIUM





VERADO[®]

Our premium outboard platform redefines the category with advanced engineering, innovative technology and refined operation.

250 - 350 HP

9



FOURSTROKE

Backed by decades of experience on water all over the world, our FourStroke models deliver reliable, economical performance you can count on season after season.

2.5 - 225 HP

19



GO BOLDLY.[™]



PRO XS®

Outboards with the hard-charging performance to put you out front and keep you there, Pro XS is the choice of tournament anglers and performance enthusiasts.

115 - 300 HP

43



MERCURY RACING

For us, innovation isn't optional. Our line of outboards springs from a heritage of uncompromising breakthroughs.

250 - 400 HP

49

VERADO	9
250 / 300 Verado.....	10
350 Verado.....	14
FOURSTROKE	19
175 / 200 / 225 FourStroke.....	20
150 FourStroke.....	24
80 / 100 / 115 FourStroke.....	26
40 / 50 / 60 FourStroke.....	28
25 / 40 / 65 / 80 Jet Outboard & 200 SportJet.....	30
25 / 30 FourStroke.....	32
15 / 20 FourStroke.....	34
15 ProKicker.....	36
8 / 9.9 FourStroke.....	38
2.5 / 3.5 / 4 / 5 / 6 FourStroke.....	40

PRO XS®	43
175 / 200 / 225 / 250 / 300 Pro XS.....	44
115 / 150 Pro XS.....	46
MERCURY RACING	49
250R / 300R FourStroke.....	50
Verado 400R.....	52
PARTS AND ACCESSORIES	55
OUTBOARD GEARCASES	58
MERCURY PROPELLERS	61
MERCURY CONTROLS & RIGGING	66
WARRANTY AND PROTECTION	70
SPECIFICATIONS	74
WELCOME TO THE MERCURY COLLECTION SHOP	79



UNRIVALED DRIVING EXPERIENCE



Verado

Ultimate performance meets ultimate refinement

True greatness believes it can always be greater. It doesn't settle. There is no finish line. It is an ever-evolving work in progress. But it can always show you how far it has come. This is Verado – amazingly quiet and smooth, exhilaratingly quick out of the hole, fast, fuel-efficient and powerful. It's the most refined outboard in history, and it's created for those who settle for nothing but the best.

Mercury Verado doesn't just sound quiet, it also feels quiet. The inline cylinder design is perfectly balanced. The **Advanced MidSection** used on the V-8 and inline 6 cylinder models utilises an unique mount system, which isolates the powerhead to virtually eliminate vibration.

**NEW**

250 / 300 Verado

Exhilarating Performance

The smooth, refined power of a V-8 4.6-litre powerhead delivers exhilarating acceleration and top speed to run offshore with confidence, with generous displacement and robust design that provide uncompromising durability and reliability. The Mercury-exclusive **Advanced MidSection (AMS)** and under-cowl noise management features set the standard for smooth, quiet marine propulsion.

No outboard in the class offers more displacement than the Verado V-8 4.6-litre. The performance-inspired 32-valve double-overhead-cam (DOHC) design and long, tuned intake runners produce more torque and allow the engine to reach higher engine speeds (rpm) faster. Weight is trimmed to 272 kilos for improved power-to-weight. Transient Spark calibration optimizes spark timing to boost hole-shot torque by as much as 7 percent, so you can get on plane and get going in an instant.

PREMIUM V-8 POWER

HP	Disp (cc)	Engine type	Dry Weight*
300	4600	V-8	272 kg
250	4600	V-8	272 kg

*Lightest model available



Superior fuel economy

V-8 Verado outboards deliver superior fuel economy at cruising speed and wide-open throttle. Advanced Range Optimization (ARO) calibration precisely adjusts the fuel mixture and delivers the best possible efficiency at any speed. Verado V-8 outboards are calibrated to deliver full performance on 87-octane fuel.

Smooth and quiet

250 hp and 300 hp Verado deliver class-leading smooth and quiet performance. The next-generation **Advanced MidSection (AMS)** moves engine mounts aft and outward to virtually eliminate vibration. Engine noise is minimized by a tuned multi-chamber air intake, fuel-injector covers that decrease high-frequency noise, and a highly engineered cowl sealing system.

Corrosion resistance

Not only are Verado outboards designed and built to withstand the rigors of saltwater operation, they're backed by a three-year anti-corrosion warranty – a significant advantage over competitors' products.



Verado V-8 advantages

Adaptive Speed Control

Whether you're heading up a swell or into a tight turn, Adaptive Speed Control on V-8 Verado outboards automatically maintains the set rpm even as load or conditions change. That means you make far fewer throttle adjustments.

Advanced Sound Control

You can customize the exhaust tone of a V-8 Verado outboard with industry-exclusive Advanced Sound Control. The dual muffler system allows you to toggle between an ultra-quiet mode and a deeper, sportier tone.

Extra charging power

V-8 Verado outboards keep batteries charged and ready on boats rigged with power-draining accessories. The Idle Charge battery-management system automatically increases idle rpm to boost alternator output and recharge low batteries to the proper level.

Graphite Grey



Redline Red



Mercury Silver



Pacific Blue



White, Black, Your Choice

Mercury's Cold Fusion White and traditional Phantom Black are available on the new 250 hp and 300 hp Verado outboards.



Cold Fusion White

Phantom Black

Expanded colour options

For ultimate personalization of 250 and 300 hp Verado outboards, four colours of factory-painted accent panels are available as kits. The panels are made from thin and durable polycarbonate that adhere firmly and provide colour harmonization with a wide variety of boat colours.

Effortless Operation

Verado comes standard with SmartCraft® Digital Throttle & Shift (DTS) for ultra-smooth shifting, instantaneous throttle response, as well as electro-hydraulic, automotive-style power steering that provides precision handling.

Pop the top

V-8 Verado features a top cowl service door that enables easy engine-oil checks and fills. A single push opens the watertight door for access to the dipstick, service decal, and carrying handle.

Keep it fresh

A convenient, easily accessed cowl-mounted freshwater flush system allows periodic removal of salt from internal water passages.



INDUSTRY-LEADING

CORROSION RESISTANCE

Not only are Verado outboards designed and built to withstand the rigors of saltwater operation, they're backed by a three-year anti-corrosion warranty – a significant advantage over competitors' products.



350 Verado

Legendary power

With supercharged torque that hits the instant you drop the digital throttle, 350 Verado unleashes pure marine muscle. Tuned to power the heaviest offshore boats out of the hole and over the swell.

Quality and reliability comes as standard. That's why the 350 Verado was designed with features like a long bolt design, which passes through the entire engine block and cylinder head keeping the powerhead in a constant state of compression and improving reliability by eliminating the effects of expansion and contraction. Also the exclusive Mercury Integrated Oil Cooler improves Verado's long term durability by maintaining proper oil temperature and reducing oil dilution.

SMOOTHEST, QUIETEST

HP	Disp (cc)	Engine type	Dry Weight*
350	2600	Inline 6	303 kg

*Lightest model available



Built to take it

350 Verado is made for bigger boats and big water, with superior Mercury corrosion protection provided by exclusive alloys, finishes and relentless durability testing. 350 Verado also features a robust long-bolt powerhead design, maintenance-free valve train, and dual water inlets for consistent cooling and longer life.

Digital Throttle & Shift for incredible response

SmartCraft® Digital Throttle & Shift delivers instant, smooth response. No lag, no waiting. Just the precise control and smooth operation you want from your outboard experience. An experience made even better with the true power steering of Verado (standard on six-cylinder models) for effortless control and minimal steering torque.

Power. Like you've never felt it before

Not at the steering wheel. Not at the throttle. More like the seat of your pants. Thanks to the perfectly-balanced in-line six-cylinder design and our **Advanced Mid Section (AMS)** design with perimeter mounts. You're as close to quiet, vibration-free running as anything on the water. Or land for that matter.

Corrosion protection that's way more than skin deep

It's an all-out fight. And we go all out to help you win by starting with corrosion-resistant low-copper aluminium alloys, then adding an internal Salt Shield coating and a MercFusion™ layered painting process.

One protective barrier after another, dedicated to shielding critical engine and drive components from nature's harshest, most corrosive elements, and backed by the industry's only 3-year corrosion warranty. Because your peace of mind is worth protecting too.



350 Verado advantages

Smoothest, quietest

The inherently balanced in-line six-cylinder engine and our Advanced Mid Section (AMS) with perimeter mounts virtually eliminate vibration in the boat.

Freshwater flush

Mercury's patented easy accessible flush system lets you flush the engine from inside or outside of the boat. It's engineered to keep the hose from kinking, and the flush-mounted cap is secured to the engine for convenience.



Integrated steering

Mercury Verado offers integrated Electro Hydraulic Power-steering, whether your use is single or multiple engines, inshore or offshore applications steering loads will always be low. With more than 75 years experience in building marine systems we know what works best.

White, Black, Your Choice

In addition to traditional Mercury Phantom Black, our popular Cold Fusion cowls are now available down to 200 hp.



Phantom Black



Cold Fusion White



Maintenance-free valve train

Thanks to “Lash for Life” valve train technology, you’ll never have to bring your outboard to a dealer for an expensive valve-lash adjustment. Unlike other four-strokes, these truly are maintenance-free.

Optimized guide plates

More horsepower means operating at higher speeds, which, while exciting, requires greater vessel control. Exclusive, optimized guide plates give the Mercury Verado 350 superior handling at high speeds, which means greater confidence in hard-running situations.

Styled vented flywheel cover

The Mercury Verado 350 has vents in its flywheel cover that allow engine heat to dissipate more easily. Lower operating temperatures help to improve the efficiency and durability of the engine, and its components.





POWER YOUR ADVENTURE. POWER YOUR FUN.



FourStroke

Built to be reliable, powerful and efficient

If you demand absolute confidence in your outboard, look no further than Mercury FourStrokes. In addition to world-class reliability, they're light and compact with awesome performance and pleasing fuel-efficiency. Mercury FourStrokes feature:

- Technically advanced, consumer-focused designs.
- Easy-to-use controls and intuitive maintenance for an improved ownership experience.
- Precise fuel-delivery systems that produce awesome performance and fuel efficiency.
- A broad product portfolio that provides more consumer options and flexibility.

Mercury FourStroke is high-tech without high stress. It's the answer to worry-free boating from a powerful and reliable engine.

Bold doesn't always mean large. Mercury's lower-horsepower FourStroke outboards are engineered to deliver amazing performance in a package that's as light and efficient as possible. With innovative designs and advanced technology, these compact and versatile Mercury outboards are quiet, responsive and reliable in the shallows and on open water.

NEW

175 / 200 / 225 FourStroke

Greater performance for awesome boating

The new Mercury FourStrokes are precision engineered from skeg to cowl. Packed with advanced technology to improve all aspects of performance and reliability, the robust 3.4-litre V-6 engines – designed to minimize weight and maximize fuel economy – deliver Mercury's best-ever FourStroke hole shot, top speed and fuel efficiency. The new FourStrokes also provide unsurpassed dampening of sound and vibration for a superior boating experience, and Idle Charge battery-management prevents boaters from draining their batteries while operating multiple electronic devices.

The compact profile is ideal for a broad range of multi-engine applications. For easy engine oil checks, just pop open the new Top Cowl Service Door. And the new V-6 FourStroke, available with mechanical or Digital Throttle and Shift controls for enhanced versatility and repower compatibility, looks like nothing else on the water. Bold, contemporary styling is inspired by speed and power, and multiple colour options make it easy to personalize.

FASTER, QUICKER, MORE EFFICIENT

HP	Disp (cc)	Engine type	Dry Weight*
225	3400	V-6	216 kg
200	3400	V-6	216 kg
175	3400	V-6	216 kg

*Lightest model available



Get on plane faster

- Our quickest and fastest 200 hp FourStroke with class-leading V-6 200 hp displacement.
- Performance-inspired quick-revving double-overhead camshaft design and deep-breathing intake.
- The lightest weight in the category.

All these contribute to unmatched hole-shot performance on a wide range of boat types. Make the most of that acceleration with the broad range of pitch-perfect Mercury propellers, expanded to match the performance of these new outboards.

Best-ever FourStroke fuel economy

Go farther with every litre! **Advanced Range Optimization (ARO)** and closed-loop fuel control work together to precisely adjust the fuel mixture and deliver the best possible efficiency. Details such as bearing sizes and oil-flow scheme have been engineered to reduce internal friction and improve overall efficiency. A hydrodynamically efficient gearcase slips through the water so the outboard has less work to do.

Compact and light

Gram by gram, Mercury engineers cut weight from the new Mercury FourStroke outboards, resulting in the lightest engines in their class. Less weight improves every aspect of performance. The V-6 powerhead configuration has been optimized to minimize size, and the single-latch cowl is designed to hug the powerhead. The V-6 FourStrokes mount tightly together, which helps them fit a broader range of transoms – ideal for simple, seamless repower applications.



FourStroke advantages

Versatility

New V-6 FourStroke outboards are available with mechanical or digital controls, providing consumers more options in new-boat and repower applications. Consumers can choose between hydraulic (standard) or power steering (optional).

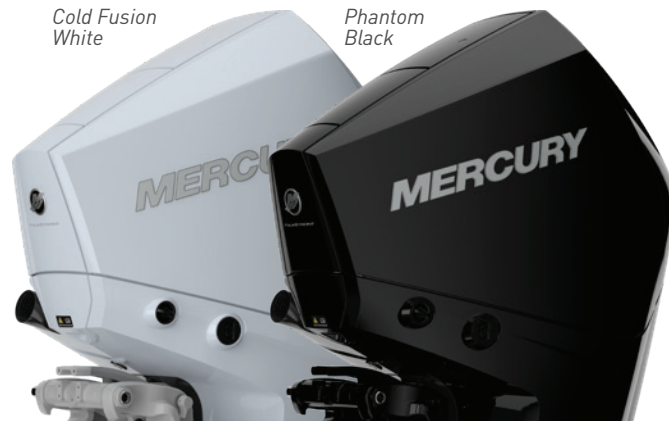
Adaptive Speed Control (ASC)

ASC allows consumers to maintain engine speed (rpm) regardless of load or condition changes – such as rough water, tight turns, tow sports and lower speeds on plane – without having to frequently adjust throttle position.



Cold Fusion White

Phantom Black



White, Black, Your Choice

Mercury's Cold Fusion White and traditional Phantom Black are available on the new 200 hp and 225 hp FourStroke outboards.

Low-voltage battery-management

Idle Charge battery-management prevents boaters from draining their batteries while operating multiple electronic devices. When battery voltage is reduced, the engine will automatically increase idle rpm to boost alternator output and recharge low batteries to the proper level.

Expanded colour options

Mercury's Cold Fusion White and traditional Phantom Black are available on the new 200 hp and 225 hp FourStroke outboards.

For ultimate personalization, four colours of factory-painted accent panels are available as kits. The panels are made of thin and durable polycarbonate that adhere firmly and provide colour harmonization.

Graphite Grey

Mercury Silver

Pacific Blue

Redline Red





Maintenance made easy

Clear information for routine maintenance is provided on an engine decal under the cowl. The decal provides a quick, easy overview of routine maintenance intervals checks, along with required quantities and types of engine and gearcase oil, spark plugs, etc.

Top cowl service door

For easy and simple engine oil checks, just pop open the new Service Door on top of the cowl. A single push opens the watertight door for access to the dipstick and service decal inside. Service door also provides access to a carrying handle, and blends back into the cowl when closed.





150 FourStroke

Exceeding the boundaries of reliability

The mission to our engineers was: design and make the most reliable 150hp FourStroke outboard in the industry. To do that they started with a strong 3.0L block capable of producing more than 250hp and asked it to deliver only 150hp. Doing so greatly increases the powerhead's long term durability.

Add to this class leading displacement engine a robust gearcase and nearly 10,000 hours of engineering and field testing, then back it all up with an industry leading limited 5-year factory backed warranty, you can see why we consider their mission accomplished.

Additionally it's small, compact design makes it a perfect fit with a wide range of boating applications. All this, and it still weighs in at a light, fuel-saving 206 kg.

COMPACT AND VERSATILE

HP	Disp (cc)	Engine type	Dry Weight*
150	3000	Inline 4	206 kg

*Lightest model available



Perfect for repower

The compact, lightweight design of Mercury's 150 hp FourStroke can be mounted on tight boat transoms, for boats on a trailer every kilo saved is a benefit during transportation. The 150 FourStroke is also flexible enough to accommodate mechanical or hydraulic steering, mechanical control/cable systems and a full complement of instruments.

Don't stress out

Work less, do more. Sounds good, right? That's the key behind the 150 hp Mercury FourStroke. With 3.0L displacement this 4 cylinder single overhead cam design works less to produce more torque and horsepower, which means exceptional durability and long-term peace of mind.

Lightweight powerhouse

Typically the higher the displacement, the higher the weight. Not in the case of the 150 hp Mercury FourStroke. The 150 is the lightest engine in its class, this 150 hp FourStroke is a great fit for repower and new boat packages alike.

Less time in the shop

The 150 hp FourStroke looks good with the cowl on or off, with convenient and easy access to perform basic maintenance. Add in the no-spill oil change system, an easy access fuel filter and a maintenance-free valve train and you've got one of the easiest to maintain outboards on the market today.





80 / 100 / 115 FourStroke

High displacement / Less weight

Thanks to Mercury's never-ending commitment to provide industry-leading innovation, now you can hang a lighter, more compact FourStroke outboard on your transom that delivers better performance, hole shot and tow sport capability than the previous 80-115hp models – along with increased fuel savings, hassle-free maintenance and rugged reliability.

These FourStroke outboards displace 2.1 litres, which means they work smarter – not harder – leading to improved durability and longer life, not to mention greater hole shot, superior overall acceleration and awesome top speed.

Less weight combined with high displacement helps these FourStroke outboards provide maximum fuel efficiency, especially at cruising speeds. Specialized oil scrapers and bearings minimize friction in the crankshaft, also resulting in decreased fuel consumption.

Sound and vibration are minimized by the tightly sealed, thermo-bonded cowl; the Idle-Relief Muffler, which utilises an acoustic filter to reduce high-frequency exhaust noise; a new smooth clutch design; and Mercury's exclusive Focused Mount System.

PERFECT POWER-TO-WEIGHT RATIO

HP	Disp (cc)	Engine type	Dry Weight*
115	2064	Inline 4	163 kg
115 CT	2064	Inline 4	165 kg
100	2064	Inline 4	163 kg
100 CT	2064	Inline 4	165 kg
80	2064	Inline 4	163 kg

*Lightest model available



Large and in charge

Need more muscle? Upgrade to a Command Thrust model with its larger gearcase and 2.38:1 gear ratio. Paired with Mercury's V-6-class big-diameter propellers, the 100 & 115hp FourStroke delivers even better acceleration, awesome manoeuvrability and superior stopping power.

Heavy Duty

This larger gearcase footprint, combined with the robust 2.38:1 gear ratio and access to Mercury's class-leading offering of large outboard propellers, is the perfect combination for pontoons, larger/heavier fibreglass or aluminium fishing and pleasure boats or heavy-duty commercial applications.

Counter-rotation

For the first time, Mercury is offering a 115 hp FourStroke with left-hand rotation. The addition of a counter-rotation model provides neutral steering feel and superior handling in a twin-engine rig. Two 115 Command Thrust engines on the transom provide the manoeuvrability and get-home safety of higher-horsepower twins – at a much lower price.

Improved acceleration

The larger "CT" gearcase provides more leverage to lift heavier hulls onto plane and keep them on plane at lower speeds. The 2.38:1 gear ratio lets the engine spin up more rapidly, developing torque at a faster rate.

Reasons to repower

A new Mercury FourStroke can re-energize your boat with improved acceleration, performance and manoeuvrability. The industry's lightest 115hp FourStroke weighs just 163kg, these FourStrokes are 18 kg lighter than the prior generation of Mercury FourStrokes and 9 kg lighter than the nearest competitor.

They're a great fit even on transoms that can't handle the weight of older, heavier FourStrokes, and their sleek, low profiles make them easier to fish over and around.





40 / 50 / 60 FourStroke

High displacement / Less weight

The Mercury 40 hp to 60 hp EFI engines provide enhanced SmartCraft capability a comprehensive boat and propulsion monitoring system, supplying detailed engine status and performance data for virtually all engine functions such as trim, speed, rpm, troll control, fuel flow and for a wealth of boat functions, like fuel level, battery voltage.

SmartCraft also provides Engine Guardian by protecting your engine by constantly monitoring engine sensors and providing early indication of the unlikely event that the engine is not operating as designed, and proactively taking corrective action when needed.

Mercury's 40 hp to 60 hp full SmartCraft capability also provide a possibility to upgrade with an optional Theft Deterrence System (TDS) or Mercury's advanced Active Trim system.

SMARTCRAFT DIGITAL KNOWLEDGE

HP	Disp (cc)	Engine type	Dry Weight*
60 EFI CT	995	Inline 4	118 kg
60 EFI	995	Inline 4	112 kg
50 EFI	995	Inline 4	112 kg

*Lightest model available





More Control

The Mercury 60 Command Thrust model(s) have a taller gearcase, oversized prop and lower gear ratio, they deliver more thrust and control than any other outboard of comparable horsepower.

Increased thrust is delivered by a 2.33:1 gear ratio with 44% larger gears.



The Big Tiller

Mercury's optional Big Tiller popularity has increased for use on open inflatables, ribs and fiberglass boats where the longer tiller grip with convenient mounted power trim switch for easy access is easy and safe to operate at your fingertips. Sport fishers like the optional slow speed (troll) control feature that allows for setting the slow boat-speed precisely at the speed the fish will bite.



HP	Disp (cc)	Engine type	Dry Weight*
40 EFI	995	Inline 4	112 kg
40 Pro EFI	995	Inline 4	118 kg

*Lightest model available

HP	Disp (cc)	Engine type	Dry Weight*
40 EFI	747	Inline 3	98 kg
40 CARB	747	Inline 3	93 kg

*Lightest model available



25 / 40 / 65 / 80 Jet Outboard & 200 SportJet

Shallow-Water Champ

When the water's too shallow for propeller-driven boats, turn to a Mercury Marine Jet. Designed for extreme shallow-water operation.

A Mercury Jet outboard gets you to those hard-to-reach spots quickly and confidently, with a wide range of fourstrokes, from 25 to 80 hp, to match your needs.

- The engine and jet pump combines to produce big time propulsion. With no prop, no skeg, no snags.
- An electronic fuel injection system that delivers the power you need, right now. Less fuel, no smoke, no problem.
- Total control. Thanks to the optional centre-mount Mercury Big Tiller offered on the 40, 65 and 80 hp models. Steering, trim, shift and digital troll-control are in the palm of your hand.

GO WHERE OTHERS CANNOT

HP	Disp (cc)	Engine type	Dry Weight*
80 / 65 EFI	2064	Inline 4	165 kg
40 EFI	995	Inline 4	121 kg
25 EFI	526	Inline 3	84 kg
200 SportJet	2507	V-6	166 kg

*Lightest model available





Jet advantages

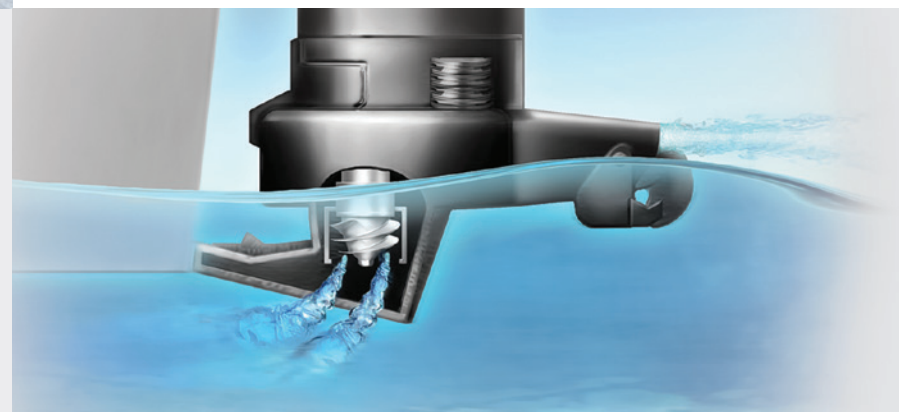
Water is drawn into the unit through the intake grill by an impeller, driven directly by the engine driveshaft. The water is then forced at high pressure through an outlet nozzle, creating thrust that drives the boat forward. To obtain reverse, a gate lifts into position over the outlet re-directing the pressure stream in the opposite direction.

Because there is no lower unit extending below the hull, the jet drive permits passage over obstacles that would foul propeller-driven outboard boats.



Shallow water. Deep experience.

Shallow water can mean opportunity and adventure. But it can also mean damaged props. With a direct-injection OptiMax engine set up for jet propulsion, you have nothing to worry about. No props. No skegs. Impossible-to-reach places are well within your reach.





25 / 30 FourStroke

Dependable starts and performance

When the battery on an ordinary engine is drained, you have nowhere to go. Not so with a Mercury 25-30 hp FourStroke. Every engine in the horsepower range comes standard with a manual recoil starter. So even if the battery quits, you can take matters into your own hands and keep your boating trip going.

Battery-free Electronic Fuel Injection (EFI) on Mercury 25-30 hp FourStroke models delivers consistently easy starting, crisp throttle response, increased fuel economy and outstanding overall performance.

Step up to a 30 high output. 30 hp exclusive.

Nothing moves a big load better than a 747 cc displacement powerhead producing more thrust to power heavier loads, from a heavy boat to a large aluminium or fibreglass fishing boat, the Mercury 30 HO delivers the control, thrust and low speed control to make your boating experience as best as you can imagine.

IT STARTS WHEN YOU SAY SO

HP	Disp (cc)	Engine type	Dry Weight*
30 HO EFI	747	Inline 3	98 kg
30 EFI	526	Inline 3	78 kg
25 EFI	526	Inline 3	71 kg

*Lightest model available



Low end torque

These 25 -30 hp FourStrokes may be small on horsepower, but they're big on displacement. Featuring loads of strong, low end torque, these outboards have the power needed to get you up on plane with immediate throttle response and quick acceleration.

Comes in handy

Thanks to the Mercury multifunction tiller handle, standard on 25 -30 hp FourStroke models, you can cruise the water with one hand behind your back. This revolutionary, all-in-one handle design delivers one handed operation for shifting, stopping, throttle control, tilting, friction control and steering. Small car booths or storage areas, the 25 -30 hp comes in handy again with a tiller that can fold all the way down for easy storage.

Great acceleration, more torque

Compact but powerful, Mercury 25 -30 hp FourStroke outboards feature **extra displacement and outstanding low-end torque** that put a boat smartly on plane.

Single-handed control

The exclusive Mercury multifunction tiller handle puts **all-in-one control** in the palm of your hand – shifting, stopping, throttle control, tilting and steering (available on 526 cc models only).

Electrical support

A high-output alternator **keeps batteries charged** and fishing electronics humming.



NEW

15 / 20 FourStroke

Get more of everything

More power. More control. More comfort. The new Mercury 20 hp and 15 hp FourStroke outboards are designed to improve every minute of your time on the water:

- Innovative adjustable tiller handle is designed for comfortable left- or right-hand operation.
- Electronic Fuel Injection (EFI) delivers quick starts and crisp throttle response.
- New twin-cylinder powerhead produces outstanding torque for great acceleration.
- Lightweight design offers enhanced portability and improved performance.
- New engine mounts keep vibration off the boat and tiller handle.
- Maintenance is made easy with no-drip oil changes.
- Ready for a wide range of applications; choose rope or electric starting, tiller or remote control, and up to three shaft-length options.

COMPACT SIZE, BOLD PERFORMANCE

HP	Disp (cc)	Engine type	Dry Weight*
20	333	InLine 2	45 kg
15	333	InLine 2	45 kg

*Lightest model available





Less weight, more torque

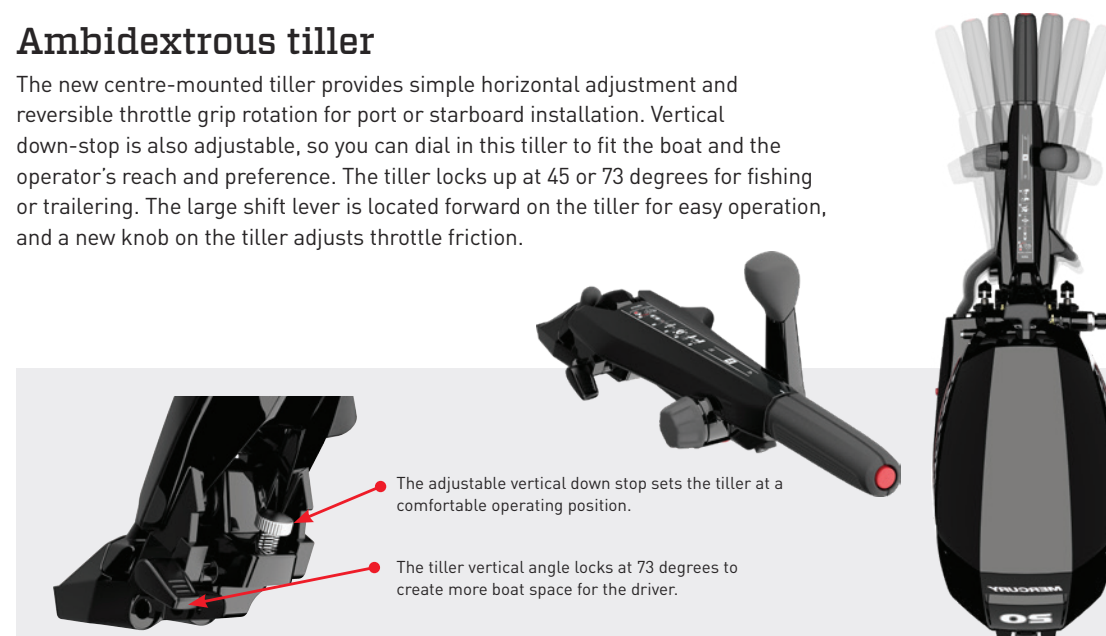
A new low-friction, single-overhead cam powerhead delivers greater torque. Meanwhile, overall weight is decreased by 4,5 kilos – a significant reduction that makes a big difference on small boats. More power and less weight improve on-plane performance and top speed. These are the quickest, fastest and strongest outboards in the category!

Easy, reliable starting

The FourStrokes' Electronic Fuel Injection (EFI) system doesn't require a battery for rope-pull starting. EFI also produces easy starts – hot or cold – and outstanding fuel efficiency. It self-adjusts to deliver peak performance according to weather and elevation. And most maintenance issues related to modern fuels are eliminated by the pressurized fuel system. Throttle response is always crisp.

Ambidextrous tiller

The new centre-mounted tiller provides simple horizontal adjustment and reversible throttle grip rotation for port or starboard installation. Vertical down-stop is also adjustable, so you can dial in this tiller to fit the boat and the operator's reach and preference. The tiller locks up at 45 or 73 degrees for fishing or trailering. The large shift lever is located forward on the tiller for easy operation, and a new knob on the tiller adjusts throttle friction.



**NEW**

15 ProKicker

Strong. Smooth. Precise. Reliable.

Get all the power you need to control bigger boats. Electronic Fuel Injection (EFI) enables precise fuel metering for smooth operation all day at the lowest trolling speeds.

The innovative adjustable tiller handle is designed for comfortable operation with port or starboard transom mounting. Lightweight design takes a load off your transom, and new engine mounts isolate vibration away from the boat and tiller handle.

POWER AND COMFORT

HP	Disp (cc)	Engine type	Dry Weight*
15 ProKicker	333	Inline 2	56 kg

*Lightest model available



Exclusive ProKicker features

- EFI delivers fast, reliable starting and controlled throttle response in all weather.
- Superior torque provides greater acceleration for better boat control.
- High-thrust four-blade Mercury propeller with added blade area and a low pitch efficiently transfers engine torque to the water – the perfect combination for controlling larger fishing boats under most conditions.
- Standard power tilt gets you up and running fast with no reach, no bending over.
- Exclusive centring straps automatically straighten and lock the outboard in place when tilted up to protect the clamp bracket during high-speed runs and trailering.
- 9-amp alternator output at trolling speeds helps keep batteries charged.

Ambidextrous tiller

The new centre-mounted tiller provides simple horizontal adjustment and reversible throttle grip rotation for port or starboard installation. Vertical down-stop is also adjustable, so you can dial in this tiller to fit the boat and the operator's reach and preference. The tiller locks up at 45 or 73 degrees for fishing or trailering. The large shift lever is located forward on the tiller for easy operation, and a new knob on the tiller adjusts throttle friction.

Easiest to drive

- Innovative adjustable tiller handle is designed for comfortable left- or right-hand operation.
- Electronic Fuel Injection (EFI) delivers quick starts and crisp throttle response.
- New twin-cylinder powerhead produces outstanding torque for great acceleration.
- Lightweight design offers enhanced portability and improved performance.
- New engine mounts keep vibration off the boat and tiller handle.
- Maintenance is made easy with no-drip oil changes.
- Ready for a wide range of applications; choose rope or electric starting, tiller or remote control, and up to three shaft-length options.





8/9.9 FourStroke

Still the lightest in their class

Mercury's 8-9.9hp FourStrokes are still the lightest in their class, but being lightweight doesn't mean cutting corners. Our 8-9.9hp FourStrokes feature a convenient multifunction tiller handle that provides easy one-hand shifting operation. Furthermore, these outboards come equipped with our exclusive automatic reverse hooks that don't require you to change a clumsy lever manually to hold the engine in place while reversing.

Thanks to the Mercury multifunction tiller handle, standard on 8-9.9hp tiller handle FourStroke models, you have the boat control needed to fish all day with ease. This revolutionary, all-in-one handle design delivers one-handed operation for shifting, stopping, throttle control, tilting and steering. Giving you unrivaled manoeuvrability and making your time on the water easier and more enjoyable.

The 8-9.9hp Mercury FourStrokes feature an ingenious design that allows the boater to use the longer, sturdy tiller handle to gain leverage on the outboard and engage our exclusive 3-position ratcheting trim system. By pushing down on the tiller handle you can set the trim position. Simply, easily, every time.

LIGHT ON WEIGHT, HEAVY ON FEATURES

HP	Disp (cc)	Engine type	Dry Weight*
9.9	208	InLine 2	38 kg
9.9 CT	208	InLine 2	40 kg
8	208	InLine 2	38 kg

**Lightest model available*



Total tiller control

Tiller-steered versions feature the exclusive Mercury **multifunction tiller** that puts shifting, throttle control (with friction for fine-tuned trolling), stopping, tilting and steering in the palm of your hand.

Reliable starts

A refined fuel system delivers consistent, easy and reliable starting quality and operation. Enhancements have also been made to the cold starting procedure by incorporating a three-position choke system and an ignition timing change improved trolling speed operation.

Defining durability

The gearcase is engineered to be rugged and durable, with **robust gears and bearings** and a **heavy-duty skeg**.

Power tilt

The fastest power tilt in the industry drops a Mercury 9.9hp FourStroke outboard into the water in just five seconds. Exclusive centring straps (optional) align and secure the outboard in full tilt-up position while you're underway.

More thrust

Mercury Command Thrust outboards feature a deeper gearcase and a four-blade, high-thrust propeller with matching gear ratio – the perfect setup for trolling and precise control in all conditions.



2.5 / 3.5 / 4 / 5 / 6 FourStroke



Being light and affordable isn't the whole story

For outboard engines in this horsepower range, portability is key and Mercury's 2.5-6 hp FourStrokes are among the lightest outboards in this class. Every Mercury portable FourStroke is packed full of features, such as our automatic reverse locking system to our convenient integral fuel tanks. These FourStrokes undergo the same corrosion resistance processes used in our higher horsepower products.

These small outboards are packed with big features. From multi trim and shallow water positions (on our 4-5-6 models) to tillers with 360 degree steering (on our 2.5-3.5 hp models), you'll find the performance and versatility you need to meet any situation. Starting is easy, thanks to automatic decompression, which bleeds off cylinder pressure during start up, requiring less pulling force to start the engine.

With their low weight and conveniently positioned large grip carrying handles, getting the power to your boat is not a problem. And because these lightweight outboards are subject to our rigorous testing standards, you get the same reliability as you expect from every Mercury outboards.

THE LIGHTWEIGHT CHAMPIONS

HP	Disp (cc)	Engine type	Dry Weight*
6	123	1	25 kg
5 Sailpower	123	1	27 kg
5	123	1	25 kg
4	123	1	25 kg
2.5 / 3.5	85	1	18 kg

*Lightest model available



Precise control

Mercury 2.5 and 3.5 hp FourStroke engines feature neutral-forward shifting with 360-degree steering for full thrust in all directions.

Easy to start

Automatic decompression bleeds off cylinder pressure to reduce the pulling force required to start the engine.

Shallow water

Multiple trim positions enhance performance and enable shallow-water operation.

Portability with ease

Mercury's 4-5-6 hp FourStrokes all features standard integral fuel tank with an external fuel shut off valve and the ability to connect an optional remote fuel tank. An integral fuel tank means you don't have to connect the outboard with another fuel tank on the boat, but for the marathon boaters an optional remote fuel tank can be connected in a split second.





D I A L E D - I N P E R F O R M A N C E





ProXS[®]

Extraordinary engineering for extraordinary speed

High-performance features unite to get you there first:

- Lightning-quick acceleration
- Blazing top speed
- Steadfast dependability
- Quiet operation that belies its true power
- A foundation of Mercury Racing heritage

Mercury ProXS outboards from 115hp to 300hp are engineered for the most-demanding people on the water – anglers battling on the tournament trail and powerboaters who crave speed and acceleration. Mercury developed exclusive components and tuning to extract every ounce of performance from each ProXS model.

**NEW**

175 / 200 / 225 / 250 / 300 Pro XS

Winning acceleration

No outboard gets from zero to wide-open quicker than a Mercury Pro XS, now with V-8 4.6-litre and V-6 3.4-litre muscle. This is performance that will rocket your rig out of the hole and to the next hot spot in record time. These Pro XS models feature generous displacement in a performance-tuned powerhead with a deep-breathing double-overhead-cam design and long-runner intake tract that delivers instant throttle response at any speed.

More displacement delivers more torque, and new Transient Spark technology optimizes spark timing to boost that torque during hole shot with a 1.75:1 gear ratio and a robust 3.2-centimeter-diameter prop shaft is designed for semi-surfacing, high-speed applications. Specific performance calibration takes rpm to 6200 at wide-open throttle for more flexible prop selection.

Squeezing speed from fuel

Mercury V-8 and V-6 Pro XS models transform every drop of fuel into performance to deliver excellent economy at cruising speed and wide-open throttle. Advanced Range Optimization (ARO) calibration utilizes closed-loop fuel control to precisely adjust the fuel mixture and deliver the best possible efficiency.

TAKE IT TO THE LIMIT

HP	Disp (cc)	Engine type	Dry Weight*
300	4600	V-8	229 kg
250	4600	V-8	229 kg
225	4600	V-8	229 kg
200	4600	V-8	229 kg
175	3400	V-6	213 kg

*Lightest model available





Never run out of juice

A powerful alternator provides net charging output of 20 amps at idle and 85 amps total at wide open throttle. Additionally, Idle Charge battery-management technology automatically increases idle rpm to boost alternator output and recharge low batteries to the proper level.



The cowl stays on

For easy oil checks and fills just pop open the new watertight Service Door on top of the cowl. Even smarter, at start-up the optional electronic oil-level sensor automatically alerts you to low oil level.



**NEW**

115 / 150 Pro XS

When going fast matters most

The Mercury 115 Pro XS delivers significantly better performance than any other high-output 115hp outboard on the market today. In fact, the 115 Pro XS is lighter than the nearest competing 115hp engine. Its 2.1L displacement is higher than that of any competing 115hp engine. This unbeatable combination delivers higher torque, better performance and greater durability.

Meet the new boss of the 150hp high-output class. The new Mercury 150 ProXS is tuned to take mid-size boats to the limit. A 3.0-litre powerhead offers the most displacement – yet the lowest weight in the 150hp category – and acceleration-boosting Transient Spark for heightened performance. Down below is a durable and proven 4.8-inch gearcase with four front water pickups on the nose of the torpedo. That provides more flexibility to mount the engine higher, install a jack plate, or trim more aggressively to maximize top-speed performance.

Additional advantages on both 115 and all new ProXS include:

- Stiff high-performance motor mounts for better high-speed handling and feel
- Untouchable hole shot
- Superior battery management

HIT THROTTLE, HOLD ON, WIN

HP	Disp (cc)	Engine type	Dry Weight*
150	3000	Inline 4	207 kg
115 CT	2064	Inline 4	165 kg
115	2064	Inline 4	163 kg

*Lightest model available



Best-in-class acceleration

Optimized spark timing to boost torque during acceleration for better torque at the prop shaft. The lowest weight and most displacement in the category also contribute to unmatched hole shot on a wide variety of boats.

High-performance calibration

Higher wide-open-throttle rpm range permits the use of a wider selection of prop pitches, so you can prop for hole shot or top speed.

Smart charging

High ampere alternator keeps up with electronics, lights, aerator pumps and audio systems. New Idle Charge low-voltage battery-management automatically boosts idle speed and alternator output to recharge boat batteries to the proper level.





RACE INSPIRED PERFORMANCE



Mercury Racing

The Race Never Stops!

How do you improve in a category that's already fiercely strong? By creating new levels of performance, efficiency and reliability. Our line of outboards springs from a heritage of uncompromising breakthroughs. We continue to set the bar ridiculously high. Because you want it. Because we demand it.

For us, innovation isn't optional. The minute we finish an engine is the minute we start engineering its replacement. It's more than tweaking the drive or increasing the horses. It's about starting a revolution. We don't just aim to outperform our competitors – we aim to outperform ourselves.



NEW
250R/300R
FourStroke

Power. Like you've never felt it before.

The 300R FourStroke is the highest performing engine in its class. The naturally aspirated 4.6L V-8 provides an astounding 44% in increased displacement and up to 40% higher overall bottom end torque than the legacy two-stroke 300XS it replaces.

The 250R FourStroke pumps out 250 propshaft horsepower. The stout V-8 powerhead provides an astounding 53% increased displacement and up to 40% higher overall bottom-end torque than the legacy two-stroke 250XS it replaces.

Designed, developed and manufactured in-house, the naturally aspirated, 4.6 L V-8 fourstroke engines share Mercury Racing's venerable Quad Cam Four Valve (QC4) sterndrive DNA – complete with aluminium four-valve cylinder heads and dual overhead camshaft (DOHC) valve train. The four valve heads and DOHC valve train are integrated with Mercury's proprietary V-8 cylinder block, packed with high performance hardware.

Colour options

An optional Graphite Grey accent panel is available as a kit. A paint-ready kit is also available to custom match the engine to the boat.



POWERFUL. FAST. EFFICIENT.

HP	Disp (cc)	Engine type	Dry Weight*
300	4600	V-8	232 kg
250	4600	V-8	236 kg

**Lightest model available.*

**** The engines registered starting from October 1, 2018 will be eligible to the 5 Year Warranty.**



Unmatched torque

Mercury's proprietary transient spark calibration, which boosts torque by as much as 7% during hole shot by optimizing spark timing and fueling, gets boats on plane quickly.

...all that displacement and power are delivered in a compact light weight package with 66-centimeter mounting centers, perfect for repower and multi-engine options.

Bold new styling

Aggressively styled top cowl designates a new era of high performance outboard propulsion from Mercury Racing. Bold new, ultra-premium graphics with Devil Red accent panel screams performance.



The cowl stays on

For easy oil checks and fills just pop open the new watertight Service Door on top of the cowl. Even smarter, at start-up the optional electronic oil-level sensor automatically alerts you to low oil level.

Verado 400R

Class leading performance

Born out of a passion for perfection, the Mercury Racing Verado 400R ups the ante in outboard engine performance. Serious enhancements have been made to the proven 2.6L supercharged dual overhead cam platform, delivering incredible achievements in power and efficiency. A 7,000 RPM rev limit for blistering acceleration, custom Mercury Racing calibration and impressive power-to-weight ratio are just the beginning of the advancements the 400R delivers. This engine isn't for the faint of heart and has been engineered specifically for lightweight high performance hulls that have 1 goal in mind - SPEED. Do you have the need?

Colour options

The Mercury 400R is offered in Phantom Black or Cold Fusion White. Six different colours (Blue, Green, Orange, Purple, Red and Yellow) are available for the graphics package on the Cold Fusion White 400R and are designed to reflect your personal style or match the colour palette of the boat. Either way, heads will turn, even if you won't be in view for long.



PERFORMANCE ABOVE ALL ELSE

HP	Disp (cc)	Engine type	Dry Weight*
400	2600	Inline 6	303 kg

*Lightest model available

** The engines registered starting from October 1, 2018 will be eligible to the 5 Year Warranty.





Brains behind the brawn

A big part of what makes the 400R so great is the suite of technologies that support the Verado platform. SmartCraft integrated marine technology is the brains behind the operation and the backbone for leading technologies like Digital Throttle & Shift and Joystick Piloting for Outboards. SmartCraft links the engine, controls, steering, and displays to provide data to keep the user informed of engine diagnostics and performance.

Supercharger

The water-cooled supercharger uses the engine cooling system to reduce air temperatures and supercharger load, increasing supercharger durability and more importantly – POWER

Cool air intake

The cool air intake grabs fresh outside air to feed the supercharger and cooler air means more horsepower for big performance gains.

For even more power, the air is cooled one last time by the charge air cooler after the air exits the supercharger and before it enters the cylinder head for maximum performance.





HIGHEST QUALITY PARTS



Industry-Leading Protection

Parts and Accessories

After taking a severe beating from rough waves, high levels of moisture and an extremely high throttle output, your marine engine requires scheduled care available from our genuine parts and accessories. With so many moving parts, your outboard lives on proven performance oils and lubricants specially designed by our experienced and knowledgeable engineers.



The right engineering

A world-class engine should be maintained with world-class parts. Mercury Precision Parts® and Quicksilver Marine Parts & Accessories® are original parts and accessories, so they keep your engine within its original specifications. They should – they're designed by the same people who design Mercury engines.

Pay attention to your engine safety!

Use only genuine parts and accessories, because only Mercury and Quicksilver grant you reliability and full efficiency, this is the original parts strenght!

The materials employed are exclusively developed for Mercury engines. Our lubricants, accessories, spare parts and propellers are the right choice for each engine.



Tested & Proven

Component samples are drawn from the assembly line and checked to ensure conformity with the original design.

All outboards are extensively tested in the engineering lab where technicians can monitor all engine vital signs and performance.

Why using genuine Mercury and Quicksilver Service Parts?

- All Genuine parts are manufactured according the same high quality standards and are rigorously tested during many hours while after market parts are simply replicated!
- To succeed testing, the usage of superior materials is required assuring the ultimate in reliability.
- Genuine Service Parts are specifically engineered for marine applications. Load and heat in a marine environment is different from automotive and requires more robust part specifications.
- Use Genuine Service Parts to ensure your Mercury outboard performs to a high quality without voiding the warranty.
- Genuine parts contribute to maintaining your Mercury engine's used market value.



Oils & Lubricants

Our specialized oils and lubricants are manufactured to give any outboard the best performance, making Quicksilver Lubricants your only choice during scheduled maintenance.

#1 Marine Oil on the Market:

- 5 years of Engineering and development.
- Ultimate wear protection keeps cams and other engine parts looking and operating as new for longer.
- Recommended for more engines on the market than any other 4-stroke oil.
- Quicksilver is 34% stronger than FC-W minimum requirement.
- Approved by Mercury Marine engineers and meets warranty requirements.

Recommended Quicksilver TwoStroke Oils

	2.5 hp - 30 hp*	40 hp - 115 hp*	Above 115 hp*	All hp Direct Injection
Premium	★★	★★	-	-
Premium Plus	★★★	★★★	★★★	★★★
OptiMax/DFI Oil	★★★★	★★★★	★★★★	★★★★

* CARBureted or EFI

Recommended Quicksilver FourStroke Oils

	2.5 hp - 30 hp*	40 hp - 115 hp*	Above 115 hp*	Verado
25W40	★★★	★★★	★★★	★★★
25W40 Synthetic Blend	★★★★	★★★★	★★★★	★★★★

NOTE: 10W30 is recommended in operating temperatures for use below 4°C (40°F) for outboards (except Verado) and outboard 30 hp and below with manual start.

Better Control

Outboard Gearcases

All that power. It won't get you anywhere without a properly designed gearcase. One that fits your boat and engine properly. In addition to the gearcases that come standard with your outboard, Mercury has engineered specialized gearcase options to fit unique boat application and performance needs. Whatever Mercury outboard you're running, rest assured you'll have the perfect performance-matched gearcase that gets the most out of your outboard.



Standard

The standard bearer. Specifically designed to leverage the hydrodynamic engineering expertise that ensures that the horsepower your Mercury outboard creates is efficiently transferred to the propeller, providing you the performance and fuel efficiency you come to expect from your engine.





Command Thrust

The larger Command Thrust "CT" gearcase with a bigger-diameter propeller lifts heavy boats onto plane more easily and holds them there at lower speeds without impacting top speed.



Heavy Duty (HD)

Perfect for more aggressive go-fast boats and commercial offshore applications that operate in rough seas or want that extra mile per hour. We pair our Offshore 5.44-inch gearcase with a 1.75 gear ratio and 1.25-inch prop shaft for added durability.



Torque Master II

The Torque Master II gearcase is designed specifically for performance bass boats with top speeds of up to 85 mph. Its stout 1.25-inch prop shaft can handle the strain of running at an elevated mounting height. Patented front water pickups keep the engine running cool regardless of engine height. A cambered skeg improves handling and drivability.



Sport Master

Sport Master Gearcase offers heavy-duty durability for boats that travel in excess of 85mph (74 knots). The Sport Master gearcase is equipped with low-water pick-ups and a crescent leading-edge torpedo design that maximizes efficiency.



PREMIUM PROPELLERS



Perfecting propulsion



Mercury Propellers

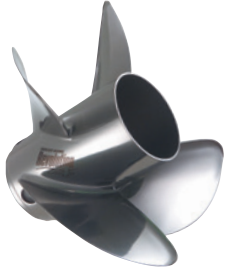
Mercury propellers are produced by an engineering crew with more than 160 years of combined experience and a manufacturing team dedicated to perfection. Mercury uses proprietary and patented metals to design and build propellers for best-in-class performance and fuel-efficiency improvements.

Mercury recently introduced a four-blade propeller that generates enough lift to outrun its three-blade counterparts, and a hub system that significantly decreases shift noise and vibration for a better boating experience.

Prop selection can impact virtually every aspect of your boat's performance, and Mercury has a solution for every propeller challenge. It's no wonder you see Mercury propellers on boats of all engine brands.

Comp Series

Unmatched performance. Mercury's Comp Series propellers stand alone in the market as the top-performing propellers in acceleration, top speed and fuel economy.



REVOLUTION 4®

- Aggressive four-blade design provides outstanding holding, hole shot and improved midrange performance.
- Ideal for 135hp and above outboard-powered walleye boats, centre consoles and sport boats.



ENERTIA®

- Mercury's first propeller to utilize the added strength and durability of Mercury's X7 alloy.
- Improves both top speed and acceleration.
- Fits 135hp and above outboards.



ENERTIA ECO

- Designed for heavy, high-horsepower boats where fuel economy at cruise is top priority.
- Large-diameter propeller with high-progressive rake providing extra bow lift, resulting in up to 10% fuel economy gains at cruising speeds.



FURY®

- Mercury's revolutionary tournament bass propeller.
- Comprised of Mercury's X7 alloy with a reduced diameter and large blade area that measurably improves acceleration and top speed.
- Designed for class-leading performance for all bass, bay and flats boats running 200hp and above engines.



FURY 4®

- Mercury's high performance tournament load bass propeller.
- Manufactured with Mercury's X7 alloy for extreme durability.
- Designed for unmatched performance for the angler running heavily weighted 20 – 22' bass boats.

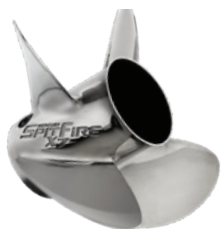


BRAVO I®

- The world's best-selling high-performance propeller.
- Ideal fit for high-speed, high-drive-height outboard.
- Provides outstanding performance for all 'go-fast' boats, including catamarans and stepped hulls.

Elite Series

Where performance meets reputation. Mercury's Elite Series propellers provide class-leading durability and performance. These are our best-selling designs.



SPITFIRE X7®

- Superior acceleration generated through a small diameter design.
- Ultimate top speed and holding through aggressive cup.
- Designed for all boat types utilizing Mercury's 75-115 hp standard outboards.



HIGH FIVE®

- Five-blade stainless steel design offers ultimate hole shot and handling.
- Perfect propeller for supreme tow sport performance
- Fits 135 hp and above outboards.



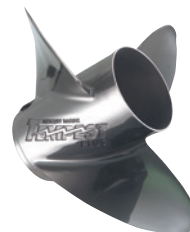
MIRAGE® PLUS

- Best-selling high-horsepower propeller in the world.
- Large diameter design works well across a wide range of applications.
- Fits 135hp and above outboard.



SPITFIRE®

- Mercury's state-of-the-art aluminium propeller provides three-blade speed with four-blade holding and acceleration.
- Aggressive four-blade design with high rake angles and added cup for tenacious holding.
- Fits 25 - 250 hp outboards.



TEMPEST® PLUS

- Designed to make big boats go fast.
- Higher rake and bigger cup provide better handling and lift on big V-6 outboard-powered boats.
- Ideal for 135 hp and above outboard-powered bass and tournament walleye boats 5 meters and longer.



TROPHY® PLUS

- Designed to deliver exceptional bow lift for bass and flats boats running at high drive heights.
- Unique design allows for venting both through and over the hub, providing quick holeshot and stable handling at high speeds and tight turns.
- Fits 135hp and above outboards.



TROPHY® SPORT

- High-performance propeller for bay and flats boats utilizing 40 - 60 hp outboards.
- Four-blade design generates incredible hole shot and holding when compared to a three-blade propeller.

Sport Series

Perfect balance of performance and value. Mercury's Sport Series propellers are proven designs for boaters ready to enhance the performance of their boat.



BLACK MAX®

- World's best selling aluminum propeller.
- Perfect combination of performance, durability and value.
- Fits outboards 2.5 - 250 hp.



LASER II

- Perfect compliment to bass boats and aluminium deep-v fishing boats where speed is the priority.
- Aggressive rake angles provide excellent bow lift with vented hub for impressive acceleration.
- Fits 75 - 125 hp outboards.



VENGEANCE®

- All-purpose stainless steel propeller offers improved performance and durability over aluminium propellers.
- One-piece cast steel for exceptional strength and durability.
- Fits 20 - 250 hp outboards.



VENSURE®

- Stainless steel four-blade design delivers good acceleration and holding power.
- Provides great bow lift for rough water performance.
- Fits 135 hp and above outboards.



Find the perfect prop

Follow five easy steps on the Mercury Prop Selector to find the ideal prop options for your boat and conditions.



Try it now at:
MercuryMarine.com/propellers



X7 Alloy

A revolutionary proprietary alloy from Mercury that shatters the rules of propeller design X7 is 30 percent stronger and four times more durable than conventional stainless steel, allowing prop designs that are impossible with conventional stainless steel.

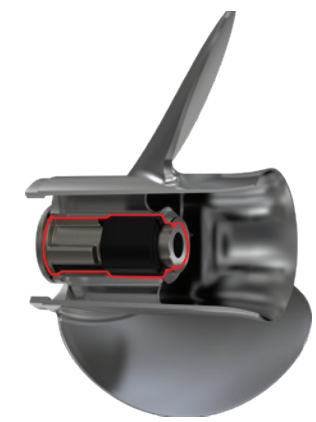


Merccalloy®

An aluminium alloy so revolutionary – it’s patented. Merccalloy is specially designed for the die-casting process, helping produce the highest quality, porosity-free propeller castings that result in increased strength and ductility.

Flo-Torq SSR HD

The Flo-Torq SSR HD is the quietest and smoothest shifting propeller hub system in the market for high horse-powered outboards. It delivers a 10-19% shift clunk improvement vs. other noise reduction rubber hub systems and a 25%+ improvement vs. solid hub designs. The Flo-Torq SSR HD rotates both port and starboard - eliminating shift clunk and vibration for quiet and smooth shifting.



PVS® Plugs

PVS (Performance Vent System) is an exclusive Mercury innovation that allows you to custom- tune the venting of your propeller – this gives you the power to customize the performance of your propeller to match your engine. Just by varying the size of the exhaust hole, you can improve your performance. This is a system you can only get with select Mercury propellers.



Flo-Torq® Hub System

The Flo-Torq II is specially designed to cushion and protect the drivetrain from most impacts. Plus, just like all Mercury® engines, the Flo-Torq II System also provides unmatched corrosion protection – giving you peace of mind and the freedom to make the most of your time on the water.



Boldly do
what makes
you happy

Mercury Controls & Rigging

Selecting the best engine for your boat is the first step: Adding the appropriate controls and rigging not only makes boating easier, it delivers the best experience your boat and engine can provide. Controls and rigging are the displays you read and the instruments you use to start, stop, go and manoeuvre – everything that puts control of your boat in your hands. Mercury’s controls and rigging are integral elements of the “connected Mercury system” that extends past our core products to deliver aesthetically pleasing, technologically advanced, and user-friendly prop-to-helm solutions.





INTUITIVE DESIGNS



Mercury VesselView®

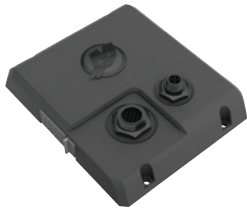
Mercury® VesselView® allows you to display engine information, genset, sounder, and much more. It has more information and data on boat and engine functions than any other system in the boating industry: rpm, speed, fuel flow and efficiency, temperature, trim, and more. You can monitor up to four engines at a time on an intuitive, "at a glance" LCD screen.

Mercury VesselView screens (903/703/502/403) integrate an Active Trim interface so that the Active Trim dash pash is not required.

VesselView® Mobile

VesselView Mobile allows you to use your mobile device (smartphone or tablet, Android or iPhone) to connect with your Mercury outboard or sterndrive engine. The plug-and-play module connects to your device via Bluetooth, providing quick, convenient access to your engine's data. One module can monitor up to four engines. You can even customize the data viewed across three screens to fit your boating style.

The product is compatible with all Mercury SmartCraft-capable engines 40 hp and above built since 2003. One module supports single through quad engine applications.



VesselView Link

Looking to fully integrate your existing multi-function display with your Mercury propulsion system? VesselView Link is the answer. Offered in single-engine or multi-engine (2 to 4 engines) versions, this is your link to all the features SmartCraft has to offer. Available on compatible Lowrance and Simrad displays, you now have all the VesselView information and control capability at your fingertips. With a user interface that's easy to navigate, you're able to integrate the following systems into one display.

NMEA 2000 Gateway

The NMEA 2000 open protocol used by a number of gauge and systems manufacturers for communication between marine electronic devices can now interact with Mercury SmartCraft devices. The gateway also allows NMEA 2000 devices, such as trim tabs, to be shown on SmartCraft gauges. The gateway benefits you by allowing you to purchase NMEA 2000-compliant devices, such as chart plotters, and show SmartCraft engine data on these devices.

Works with any SmartCraft capable engine in single, dual, triple or quad applications.



Active Trim

This intuitive, hands-free system continually adjusts engine trim based on changes in boat speed to improve performance, fuel economy, and ease of operation. It responds to boat manoeuvres and speed changes with precision and delivers a better overall driving experience. No knowledge of trimming an engine is needed to take advantage of Active Trim.

Active Trim is compatible with all current SmartCraft-capable Mercury outboards and sterndrive engines (40 hp and above).

ROKK Mini Mount System

ROKK mini is a compact and multi-adjustable mounting system for smart phones, tablets, small fish finders, digital and action cameras and more! Small in size but big on features, ROKK Mini is simply the toughest, most reliable mount for your tech. No compromise.





Joystick Piloting®

Forget complex. Forget stressful positioning or manoeuvring in tight spaces during less-than-ideal situations. Focus instead on a new feeling. One of total confidence. Confidence that comes from being effortlessly, intuitively, completely in control of your boat, thanks to the Mercury's Joystick Piloting system. The power to make your boat do exactly what you want, with just a touch of your fingertips. You don't have to be a control freak to appreciate that.

Digital Throttle and Shift

No cables, no hesitation, no maintenance. Zero shift and throttle effort. Instant response. Our SmartCraft Digital Throttle and Shift (DTS) delivers precise control and smooth operation to the outboard experience. Classic look, feel and ergonomics. Inspired by high-tech aircraft controls.



SC1000 and MercMonitor Gauges

The Mercury SC1000 and MercMonitor are the marine industry's most advanced gauges, offering essential vessel information along with advanced features such as Smart Tow, ECO, Troll Control and NMEA 2000 Gateway (gauge dependent). Mercury SmartCraft gauges provide instant, reliable information at a glance. Combined with additional sensors, Mercury's digital gauges are powerful tools to provide safety and comfort on the water.

Multi-colour LCD screen

Multi-colour LCD screen provides you with critical data on dozens of engine and boat functions. Temperature, depth, alarms, rpm, speed, water pressure, fuel flow, and much more. Perfect for a wide range of boats, both outboard and sterndrive, single- and multi-engine platforms. Program the data to match your needs and boating preferences. Select a colour to match your boat - or your mood.



Theft Deterrent System (TDS)

The Mercury Theft Deterrent System (TDS) improves boat and engine security. Simply plug the automotive-style key fob into the docking station on the helm and you're ready to go. The engine will start in guardian mode if the fob isn't present, but rpm is limited.

Moving Propeller Alert

The MP Alert system is the ideal safety choice to notify swimmers that a propeller is in motion. This system uses LED lights on the stern of the boat to alert swimmers that the propeller is moving.



S A T I S F A C T I O N

Satisfaction Guaranteed

Warranty and Protection

We know we build reliable engines. We know we make them easy and intuitive to use. We also know that few environments are more unpredictable than the marine environment. That's why if something goes wrong, we're right there with the most comprehensive warranty in the industry. It's our commitment to your satisfaction and our promise to you for putting your faith in us.



G U A R A N T E E D



Peace of mind

Every pleasure use Mercury outboard, from our 2.5 hp portable to our Verado 400R are eligible to an extended 5 year warranty coverage as standard manufacturer's warranty for your peace of mind.

Five-year limited non-declining, factory-backed. Conditions and exclusions apply. Not applicable for commercial and racing applications.

Backed for the future

Every pleasure use Mercury outboard of FourStroke and Verado technologies comes with a standard three-year, factory-backed non-declining warranty. The coverage on the last day of your warranty is exactly the same as the first day you bought your engine. The coverage doesn't decline based on the age of the engine, nor the hours you've logged.

Built to live in water

The same is true with our exclusive corrosion protection. Mercury provides all pleasure craft engines limited corrosion protection for three full years. So no matter whether you run in freshwater or salt, you're covered in even the harshest marine environments.



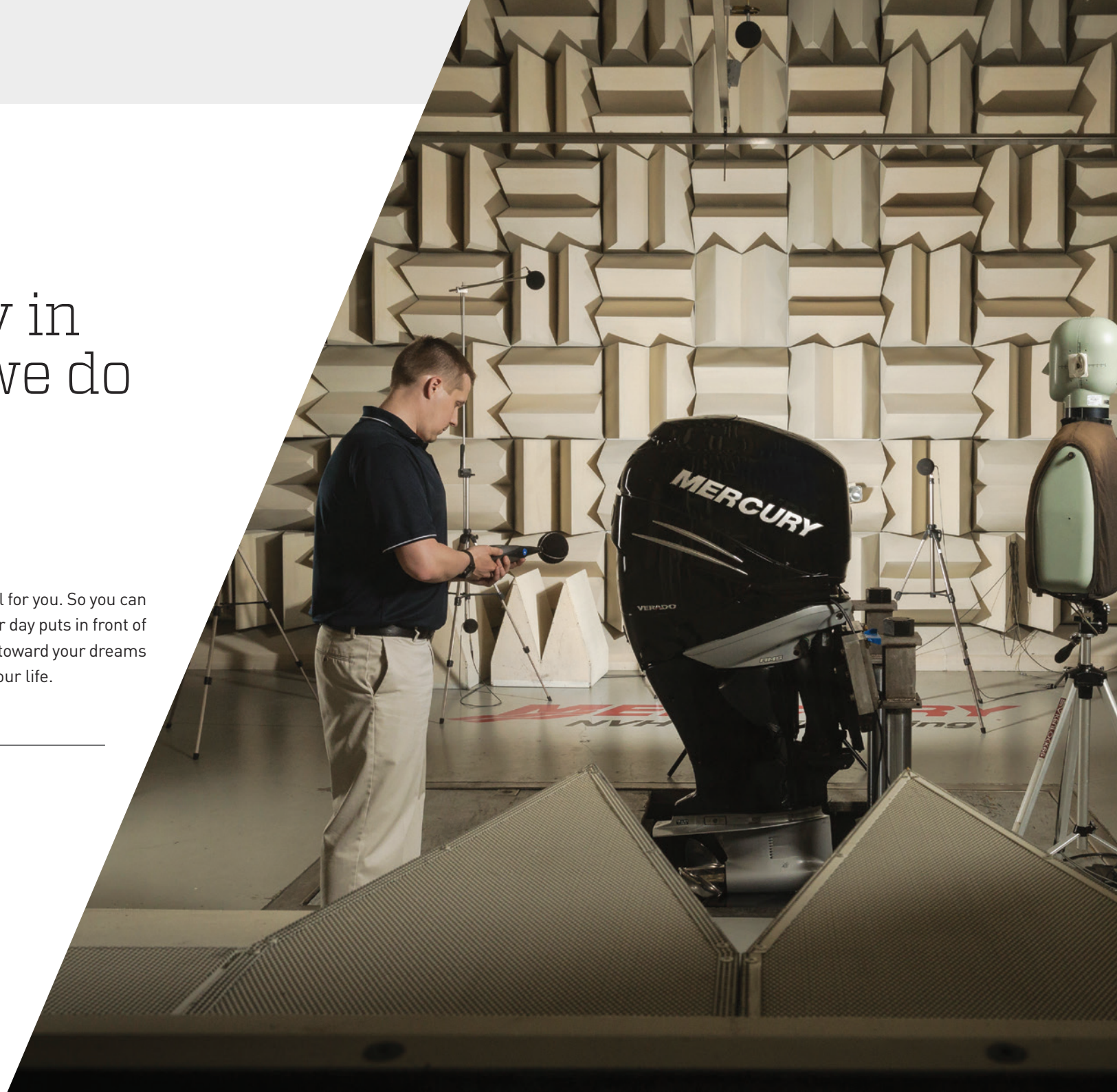
We go boldly in everything we do

In our sketches.

In our labs.

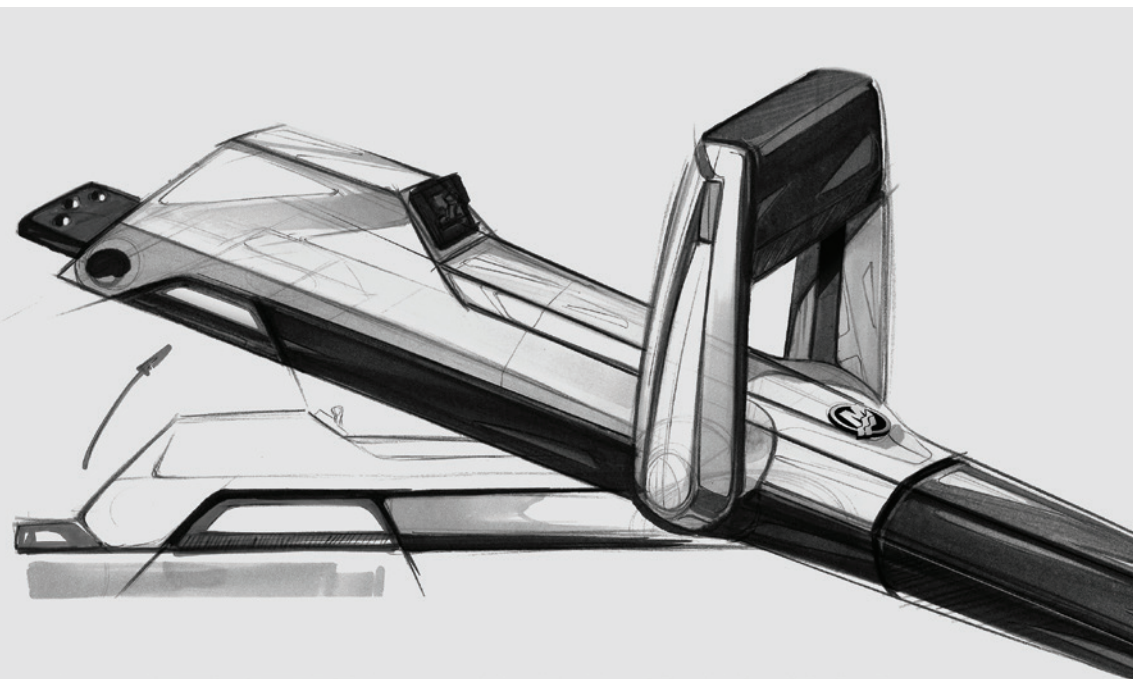
In our castings, machine shops
and aspirations.

We eat, breathe and live boldly. And we do it all for you. So you can go faster. Farther. Bolder. No matter what your day puts in front of you, our engines are always ready to push you toward your dreams and take you on the greatest experiences of your life.





YOUR PASSION FUELS OUR PASSION





VERADO®
350 - 250 HP



RACING
400 - 250 HP



PRO XS®
300 - 150 HP



FOURSTROKE®
225 - 150 HP

Models ¹	Verado 400R	Verado 350	300R	300 Pro XS	Verado 300	250R	250 Pro XS	Verado 250	225 Pro XS	225 EFI	200 Pro XS	200 EFI	175 Pro XS	175 EFI
Kilowatts ²	294	257	221	221	221	184	184	184	165	165	147	147	129	129
Max.RPM at Full Throttle	6400-7000	5800-6400	5800-6400	5600-6200	5200-6000	5600-6200	5600-6200	5200-6000	5600-6200	5200-6000	5600-6200	5000-5800	5400-6000	5000-5800
Cylinders	6 (in-line)	6 (in-line)	V-8	V-8	V-8	V-8	V-8	V-8	V-8	V-6	V-8	V-6	V-6	V-6
Smart Craft Compatible	Yes	Yes	Yes	Yes	Yes	Yes	Yes	Yes	Yes	Yes	Yes	Yes	Yes	Yes
Displacement	2600 cc	2600 cc	4600 cc	4600 cc	4600 cc	4600 cc	4600 cc	4600 cc	4600 cc	3400 cc	4600 cc	3400 cc	3400 cc	3400 cc
Starting	Electric	Electric	Electric	Electric	Electric	Electric	Electric	Electric	Electric	Electric	Electric	Electric	Electric	Electric
Gear Ratio	1.75:0	1.75:1	1.75:1	1.75:1	1.85:1	1.75:1	1.75:1	1.85:1	1.75:1	1.85:1	1.75:1	1.85:1	1.85:1	1.85:1
Gear Shift	DTS	DTS	DTS	DTS	DTS	F-N-R	DTS	DTS	DTS	DTS	DTS	DTS	DTS	DTS
Steering Midsection	AMS - EHPS	AMS - EHPS	CMS - Remote	CMS - Remote	AMS - EHPS	CMS - Remote	CMS - Remote	AMS - EHPS - BTO	CMS - Remote	CMS - Remote / BTO	CMS - Remote / BTO	CMS - Remote / BTO	CMS - Remote / BTO	CMS - Remote / BTO
Alternator System	70 amp (882 W)	70 amp (882 W)	85 amp (1071 W)	85 amp (1071 W)	115 amp (1449 W)	85 amp (1071 W)	85 amp (1071 W)	115 amp (1449 W)	85 amp (1071 W)	85 amp (1071 W)	85 amp (1071 W)	85 amp (1071 W)	85 amp (1071 W)	85 amp (1071 W)
Fuel System	Sci EFI	Sci EFI	EFI	EFI	EFI	EFI	EFI	EFI	EFI	EFI	EFI	EFI	EFI	EFI
Trim Positions	EHPT	EHPT	EHPT	EHPT	EHPT	EHPT	EHPT	EHPT	EHPT	EHPT	EHPT	EHPT	EHPT	EHPT
Fuel Tank	-	-	-	-	-	-	-	-	-	-	-	-	-	-
Fuel Requirements ³	UL95R	UL95R	UL95R	UL95R	UL95R	UL95R	UL95R	UL95R	UL95R	UL95R	UL95R	UL95R	UL95R	UL95R
Weight ⁴	303 kg	303 kg	232 kg	229 kg	272 kg	236 kg	229 kg	272 kg	229 kg	216 kg	229 kg	216 kg	213 kg	216 kg
Available Boat Transom Heights	L - XL - XXL	L - XL - XXL	L - XL - XXL	L - XL	L - XL - XXL	L	L - XL	L - XL - XXL	L - XL	L - XL - XXL	L - XL	L - XL	L - XL	L - XL
Counter Rotation	CL - CXL - CXXL	CL - CXL - CXXL	CL - CXL - CXXL	CXL	CL - CXL - CXXL	-	-	CXL - CXXL	-	CXL - CXXL	-	CXL	-	-

¹ Model offering may vary from one country to another. Please see your local dealer for specific information.

² Hp/KW measured at propshaft in accordance with ICOMIA 28.

³ 90RON compatible

⁴ Dry weight specification is for lightest model and excludes engine oil, rigging hardware and propeller.

GEAR SHIFT **DTS**: Digital Throttle and Shift • **F-N-R**: Mechanical Forward Neutral Reverse • **F-N**: Forward Neutral

STEERING MIDSECTION **AMS**: Advanced Mid Section • **CMS**: Conventional Mid Section • **EHPS**: Electric Hydraulic Power Steering • **BTO**: Big Tiller Optional • **RO**: Remote Optional

ALTERNATOR SYSTEM **ESM**: On Electric Start Models only • **OPT**: Optional • **OPT**: Optional 4 amp [50 W] lighting, 2 amp [25 W] charging • **ML**: ML Models only

FUEL SYSTEM **EFI**: Electronic Fuel Injection • **Sci**: Super Charge Injection • **DFI**: Direct Fuel Injection • **CARB**: through carburetor

TRIM SYSTEM **EHPT**: Electric Hydraulic Power Trim and Tilt • **EHT**: Electric Hydraulic Tilt (no Trim) • **GAT**: Gas assist trim • **MTT**: Manual Trim and Tilt • **SWD**: Shallow Water drive

FUEL TANK **INT**: Integrated fuel tank • **RO**: remote optional

AVAILABLE BOAT TRANSOM HEIGHTS 381 mm [S] - 508 mm [L] - 635 mm [XL] - 762 mm [XXL]

COUNTER ROTATION 508 mm [CL] - 508 mm [CL] - 635 mm [CXL] - 762 mm [CXXL]



Models ⁽¹⁾	150 Pro XS	150 EFI	115 Pro XS 115 Pro XS CT	115 EFI 115 EFI CT	100 EFI 100 EFI CT	80 EFI	60 EFI 60 EFI CT	50 EFI	40 EFI	40 EFI	40 PRO EFI	40 CARB
Kilowatts ²	110	110	85	85	74	59	44	37	29.4	29.4	29.4	29.4
Max.RPM at Full Throttle	5200-6000	5000-5800	5300-6300	5000-6000	5000-6000	4500-5500	5500-6000	5500-6000	5500-6000	5500-6000	5500-6000	5500-6000
Cylinders	4 (in-line)	4 (in-line)	4 (in-line)	4 (in-line)	4 (in-line)	4 (in-line)	4 (in-line)	4 (in-line)	4 (in-line)	3 (in-line)	4 (in-line)	3 (in-line)
Smart Craft Compatible	Yes	Yes	YES	YES	YES	YES	YES	YES	YES	YES	YES	YES
Displacement	3000cc	3000cc	2064 cc	2064 cc	2064 cc	2064 cc	995 cc	995 cc	995 cc	747 cc	995 cc	747 cc
Starting	Electric	Electric	Electric	Electric	Electric	Electric	Electric	Electric	Electric	Electric	Electric	Manual
Gear Ratio	2.08:1	1.92:1	2.07:1 / 2.38:1	2.07:1 / 2.38:1	2.07:1 / 2.38:1	2.07:1	1.83:1 / 2.33:1	1.83:1	1.83:1	2.00:1	2.33:1	2.00:1
Gear Shift	F-N-R	F-N-R	F-N-R	F-N-R	F-N-R	F-N-R	F-N-R	F-N-R	F-N-R	F-N-R	F-N-R	F-N-R
Steering Midsection	CMS - Remote / BTO	CMS - Remote / BTO	Remote / BTO	Remote / BTO	Remote / BTO	Remote / BTO	Remote / BTO	Remote / BTO	Remote / BTO	Remote / BTO	Remote / BTO	Remote / Tiller
Alternator System	60 amp (756 W)	60 amp (756 W)	35 amp (441 W)	35 amp (441 W)	35 amp (441 W)	35 amp (441 W)	18 amp (226 W)	18 amp (226 W)	18 amp (226 W)	18 amp (226 W)	18 amp (226 W)	18 amp (226 W)
Fuel System	EFI	EFI	EFI	EFI	EFI	EFI	EFI	EFI	EFI	EFI	EFI	CARB
Trim Positions	EHPT	EHPT	EHPT	EHPT	EHPT	EHPT	EHPT	EHPT	EHPT	EHPT or GAT	EHPT	GAT
Fuel Tank	-	-	-	-	-	-	-	-	-	-	-	-
Fuel Requirements ³	UL95R	UL95R	UL95R	UL95R	UL95R	UL95R	UL95R	UL95R	UL95R	UL95R	UL95R	UL95R
Weight ⁴	207 kg	206 kg	163 kg / 165 kg	163 kg / 165 kg	163 kg / 165 kg	163 kg	112 kg / 118 kg	112 kg	112 kg	98 kg	118 kg	93 kg
Available Boat Transom Heights	L - XL	L - XL	L - XL	L - XL	L - XL	L	L	L	L	S - L	L	S - L
Counter Rotation	-	CXL	-	- / CXL	-	-	-	-	-	-	-	-

¹ Model offering may vary from one country to another. Please see your local dealer for specific information.

² Hp/KW measured at propshaft in accordance with ICOMIA 28.

³ 90RON compatible

⁴ Dry weight specification is for lightest model and excludes engine oil, rigging hardware and propeller.

GEAR SHIFT **DTS:** Digital Throttle and Shift • **F-N-R:** Mechanical Forward Neutral Reverse • **F-N:** Forward Neutral

STEERING MIDSECTION **AMS:** Advanced Mid Section • **CMS:** Conventional Mid Section • **EHPS:** Electric Hydraulic Power Steering • **BTO:** Big Tiller Optional • **RO:** Remote Optional

ALTERNATOR SYSTEM **ESM:** On Electric Start Models only • **OPT:** Optional • **OPT:** Optional 4 amp (50 W) lighting, 2 amp (25 W) charging • **ML:** ML Models only

FUEL SYSTEM **EFI:** Electronic Fuel Injection • **Sci:** Super Charge Injection • **DFI:** Direct Fuel Injection • **CARB:** through carburetor

TRIM SYSTEM **EHPT:** Electric Hydraulic Power Trim and Tilt • **EHT:** Electric Hydraulic Tilt (no Trim) • **GAT:** Gas assist trim • **MTT:** Manual Trim and Tilt • **SWD:** Shallow Water drive

FUEL TANK **INT:** Integrated fuel tank • **RO:** remote optional

AVAILABLE BOAT TRANSOM HEIGHTS 381 mm (S) - 508 mm (L) - 635 mm (XL) - 762 mm (XXL)

COUNTER ROTATION 508 mm (CL) - 635 mm (CXL) - 762 mm (CXXL)



Models ¹	30 HO EFI	30 EFI	25 EFI	20 EFI	15 EFI ProKicker	15 EFI	9.9 FourStroke	9.9 FourStroke CT	8 FourStroke
Kilowatts ²	22.1	22.1	18.4	14.7	11.0	11.0	7.3	7.3	5.9
Max.RPM at Full Throttle	5000-6000	5250-6250	5000-6000	5700-6200	5700-6200	5700-6200	5000-6000	5000-6000	5000-6000
Cylinders	3 (in-line)	3 (in-line)	3 (in-line)	2 (in-line)	2 (in-line)	2 (in-line)	2 (in-line)	2 (in-line)	2 (in-line)
Smart Craft Compatible	-	-	-	-	-	-	-	-	-
Displacement	747cc	526 cc	526 cc	333 cc	333 cc	333 cc	208 cc	208 cc	208 cc
Starting	Manual and Electric	Manual and Electric	Manual and Electric	Manual or Electric	Manual	Manual or Electric	Manual or Electric	Manual or Electric	Manual or Electric
Gear Ratio	2.00:1	1.92:1	1.92:1	2.15:1	2.15:1	2.15:1	2.08:1	2.42:1	2.08:1
Gear Shift	F-N-R	F-N-R	F-N-R	F-N-R	F-N-R	F-N-R	F-N-R	F-N-R	F-N-R
Steering Midsection	Tiller / Remote	Tiller / Remote	Tiller / Remote	Tiller / Remote	Tiller / Remote	Tiller / Remote	Tiller / Remote	Tiller / Remote	Tiller / Remote
Alternator System	18 amp (226 W)	15 amp (186 W)	15 amp (186 W)	12 amp (145 W)	12 amp (145 W)	12 amp (145 W)	6 amp (76 W) ESM	6 amp (76 W) ESM	6 amp (76 W) ESM
Fuel System	EFI	EFI	EFI	EFI	EFI	EFI	CARB	CARB	CARB
Trim Positions	EHPT	EHPT or GAT or MTT	EHPT or MTT	6 & SWD or EHT	6 & SWD or EHT	6 & SWD or EHT	6 & SWD or EHT	6 & SWD or EHT	6 & SWD
Fuel Tank	25 L	25 L	25 L	12 L	12 L	12 L	12 L	12 L	12 L
Fuel Requirements ³	UL95R	UL95R	UL95R	UL95R	UL95R	UL95R	UL95R	UL95R	UL95R
Weight ⁴	98 kg	78 kg	71 kg	45 kg	56 kg	45 kg	38 kg	40 kg	38 kg
Available Boat Transom Heights	L	S - L - XL	S - L	S - L	S - L	S - L	S - L - XL	L - XL	S - L
Counter Rotation	-	-	-	-	-	-	-	-	-

¹ Model offering may vary from one country to another. Please see your local dealer for specific information.

² Hp/KW measured at propshaft in accordance with ICOMIA 28.

³ 90RON compatible

⁴ Dry weight specification is for lightest model and excludes engine oil, rigging hardware and propeller.

GEAR SHIFT **DTS:** Digital Throttle and Shift • **F-N-R:** Mechanical Forward Neutral Reverse • **F-N:** Forward Neutral

STEERING MIDSECTION **AMS:** Advanced Mid Section • **CMS:** Conventional Mid Section • **EHPS:** Electric Hydraulic Power Steering • **BTO:** Big Tiller Optional • **RO:** Remote Optional

ALTERNATOR SYSTEM **ESM:** On Electric Start Models only • **OPT:** Optional • **OPT:** Optional 4 amp [50 W] lighting, 2 amp [25 W] charging • **ML:** ML Models only

FUEL SYSTEM **EFI:** Electronic Fuel Injection • **Sci:** Super Charge Injection • **DFI:** Direct Fuel Injection • **CARB:** through carburetor

TRIM SYSTEM **EHPT:** Electric Hydraulic Power Trim and Tilt • **EHT:** Electric Hydraulic Tilt (no Trim) • **GAT:** Gas assist trim • **MTT:** Manual Trim and Tilt • **SWD:** Shallow Water drive

FUEL TANK **INT:** Integrated fuel tank • **RO:** remote optional

AVAILABLE BOAT TRANSOM HEIGHTS 381 mm (S) - 508 mm (L) - 635 mm (XL) - 762 mm (XXL)

COUNTER ROTATION 508 mm (CL) - 508 mm (CL) - 635 mm (CXL) - 762 mm (CXXL)



Models ¹	6 FourStroke	5 FourStroke Sailpower	5 FourStroke	4 FourStroke	3.5 FourStroke	2.5 FourStroke
Kilowatts ²	4.4	3.7	3.7	2.9	2.6	1.8
Max.RPM at Full Throttle	5000-6000	4500-5500	4500-5500	4500-5500	5000-6000	4500-5500
Cylinders	1	1	1	1	1	1
Smart Craft Compatible	-	-	-	-	-	-
Displacement	123cc	123cc	123cc	123cc	85cc	85cc
Starting	Manual	Manual	Manual	Manual	Manual	Manual
Gear Ratio	2.15:1	2.15:1	2.15:1	2.15:1	2.15:1	2.15:1
Gear Shift	F-N-R	F-N-R	F-N-R	F-N-R	F-N	F-N
Steering Midsection	Tiller / RO	Tiller / RO	Tiller / RO	Tiller / RO	Tiller	Tiller
Alternator System	OPT	4 amp [50 W]	4 amp [50 W] ML	OPT	-	-
Fuel System	CARB	CARB	CARB	CARB	CARB	CARB
Trim Positions	6 & SWD	6 & SWD	6 & SWD	6 & SWD	4	4
Fuel Tank	1.1 L INT - RO	1.1 L INT - RO	1.1 L INT - RO	1.1 L INT - RO	1.1 L INT	1.1 L INT
Fuel Requirements ³	UL95R	UL95R	UL95R	UL95R	UL95R	UL95R
Weight ⁴	25 kg	27 kg	25 kg	25 kg	18 kg	18 kg
Available Boat Transom Heights	S - L	L	S - L - XL	S - L	S - L	S
Counter Rotation	-	-	-	-	-	-

OptiMax Sportjet 200	80 EFI Jet	65 EFI Jet	40 EFI Jet	25 EFI Jet
147	59	48	29.4	18.4
5150-5650	5000-6000	5000-6000	5000-6000	5000-5500
V-6	4 (in-line)	4 (in-line)	4 (in-line)	3 (in-line)
YES	YES	YES	YES	-
2507cc	2064cc	2064cc	995cc	526cc
Electric	Electric	Electric	Electric	Manual and Electric
1.25:1	Jet drive	Jet drive	Jet drive	Jet drive
F-N-R	F-N-R	F-N-R	F-N-R	F-N-R
Remote	Remote / BTO	Remote / BTO	Remote / BTO	Remote / Tiller
60 amp [756 W]	35 amp [441 W]	35 amp [441 W]	18 amp [226 W]	15 amp [186 W]
DFI	EFI	EFI	EFI	EFI
-	EHPT	EHPT	GAT	GAT
-	-	-	-	25L
UL95R	UL95R	UL95R	UL95R	UL95R
166 kg	165 kg	165 kg	121 kg	84 kg
JET	L	L	S	S
-	-	-	-	-

¹ Model offering may vary from one country to another. Please see your local dealer for specific information.
² Hp/KW measured at propshaft in accordance with ICOMIA 28.

³ 90RON compatible
⁴ Dry weight specification is for lightest model and excludes engine oil, rigging hardware and propeller.

GEAR SHIFT **DTS:** Digital Throttle and Shift • **F-N-R:** Mechanical Forward Neutral Reverse • **F-N:** Forward Neutral

STEERING MIDSECTION **AMS:** Advanced Mid Section • **CMS:** Conventional Mid Section • **EHPS:** Electric Hydraulic Power Steering • **BTO:** Big Tiller Optional • **RO:** Remote Optional

ALTERNATOR SYSTEM **ESM:** On Electric Start Models only • **OPT:** Optional • **OPT:** Optional 4 amp [50 W] lighting, 2 amp [25 W] charging • **ML:** ML Models only

FUEL SYSTEM **EFI:** Electronic Fuel Injection • **Sci:** Super Charge Injection • **DFI:** Direct Fuel Injection • **CARB:** through carburetor

TRIM SYSTEM **EHPT:** Electric Hydraulic Power Trim and Tilt • **EHT:** Electric Hydraulic Tilt (no Trim) • **GAT:** Gas assist trim • **MTT:** Manual Trim and Tilt • **SWD:** Shallow Water drive

FUEL TANK **INT:** Integrated fuel tank • **RO:** remote optional

AVAILABLE BOAT TRANSOM HEIGHTS 381 mm [S] - 508 mm [L] - 635 mm [XL] - 762 mm [XXL]

COUNTER ROTATION 508 mm [CL] - 508 mm [CL] - 635 mm [CXL] - 762 mm [CXXL]



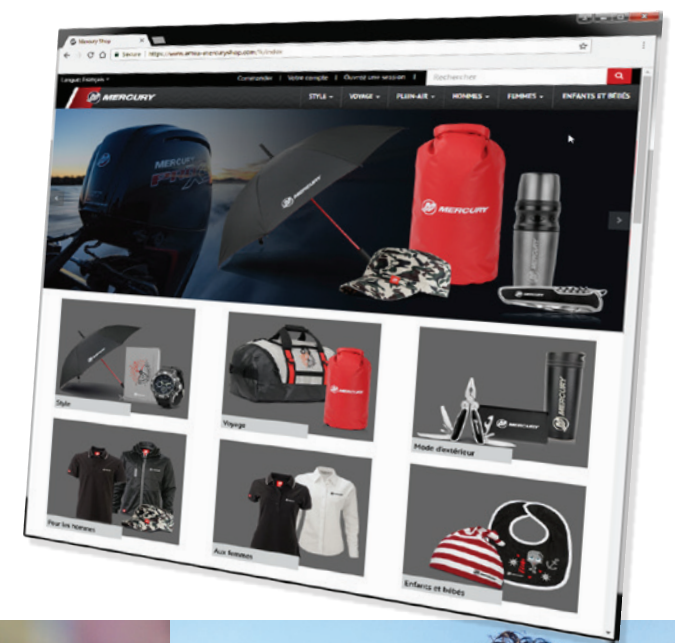
BE PART OF IT



WELCOME TO THE MERCURY COLLECTION SHOP

Fan merchandise, shop equipment, customer or employee giveaways – whatever your reason for visiting: discover our brand-new selection of custom-made merchandising products and promotional articles from the brand world of Mercury Marine!

www.emea-mercuryshop.com





MERCURY GO BOLDLY.®

MercuryMarine.com



The quality system of
Brunswick Marine in EMEA
is ISO 9001 certified

© 2018 Brunswick Marine in EMEA. All Rights Reserved. Part #: 9M0101925

Brunswick Marine in EMEA continuously explores means to improve the products it designs, manufactures and distributes. Every effort is made to produce sales and service literature which is current. Changes to specifications of engines, boats and accessories are ongoing.

This brochure should not be regarded as a precise guide to the latest specifications. This brochure is also not an offer for sales of any particular engine, boat or accessory. Distributors and dealers are not agents of Brunswick Marine in EMEA or one of its affiliates and they have no authority to bind Brunswick Marine in EMEA by any express undertaking or representation, including but not limited to representations of product, sales, applications or service nature.

Not all products are available in all countries and some are available only in limited quantities. Some products shown in this catalogue are equipped with optional accessories. Please see your local dealer.